

Project 1

Partner for Contact:
Order No.:
Company:
Customer No.:

Date: 26.07.2019
Operator:

Operator
Telephone
Fax
e-Mail

Table of contents

Project 1	
Project Cover	1
Table of contents	2
Street 1	
Planning data	3
False Colour Rendering	4
Valuation Fields	
Valuation Field Roadway 1	
Results overview	5
Isolines (E)	6
Observer	
Observer 1	
Isolines (L)	7
Observer 2	
Isolines (L)	8

Operator
Telephone
Fax
e-Mail

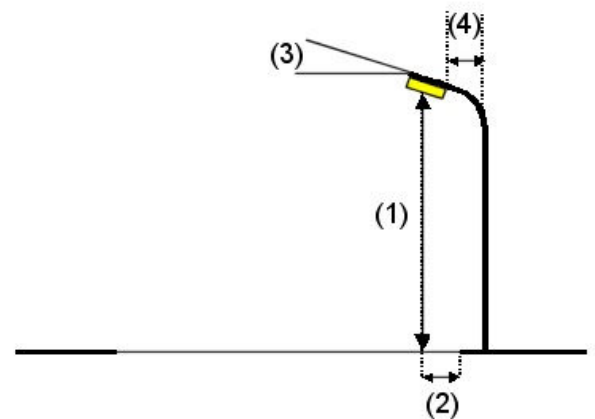
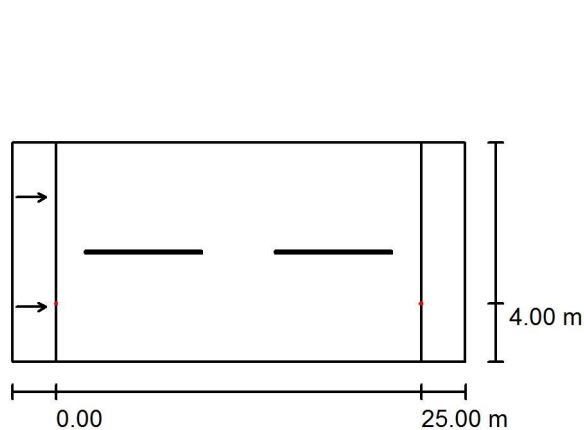
Street 1 / Planning data

Street Profile

Roadway 1 (Width: 15.000 m, Number of lanes: 2, tarmac: R3, q0: 0.070)

Maintenance factor: 0.67

Luminaire Arrangements



Luminaire:	150W
Luminous flux (Luminaire):	23238 lm
Luminous flux (Lamps):	23250 lm
Luminaire Wattage:	150.0 W
Arrangement:	Single row, bottom
Pole Distance:	25.000 m
Mounting Height (1):	8.500 m
Height:	8.400 m
Overhang (2):	4.000 m
Boom Angle (3):	0.0 °
Boom Length (4):	0.000 m

Maximum luminous intensities

at 70°:	324 cd/klm
at 80°:	104 cd/klm
at 90°:	0.31 cd/klm

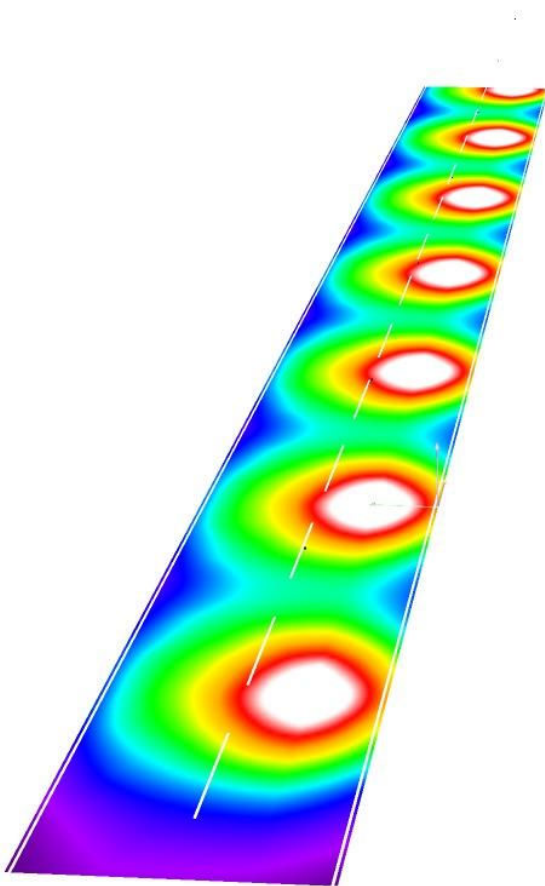
Any direction forming the specified angle from the downward vertical, with the luminaire installed for use.

Arrangement complies with luminous intensity class G2.

Arrangement complies with glare index class D.2.

Operator
Telephone
Fax
e-Mail

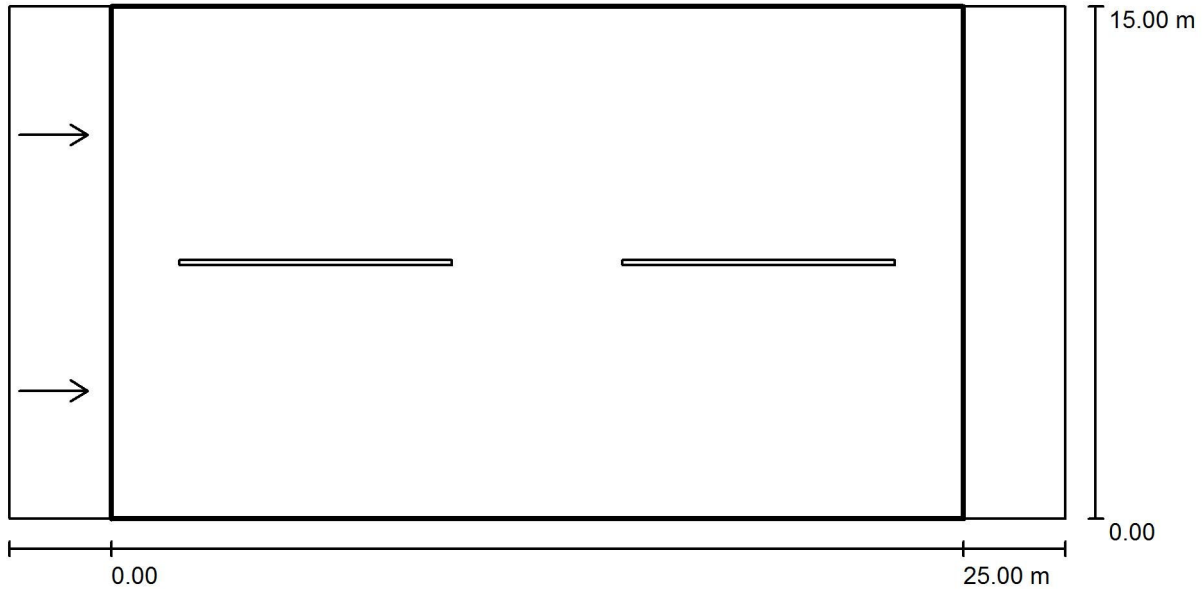
Street 1 / False Colour Rendering



0 6.25 12.50 18.75 25 31.25 37.50 43.75 50 lx

Operator
Telephone
Fax
e-Mail

Street 1 / Valuation Field Roadway 1 / Results overview



Maintenance factor: 0.67

Scale 1:222

Grid: 10 x 6 Points

Accompanying Street Elements: Roadway 1.

tarmac: R3, q0: 0.070

Selected Lighting Class: ME4a

(Not all lighting performance requirements are met.)

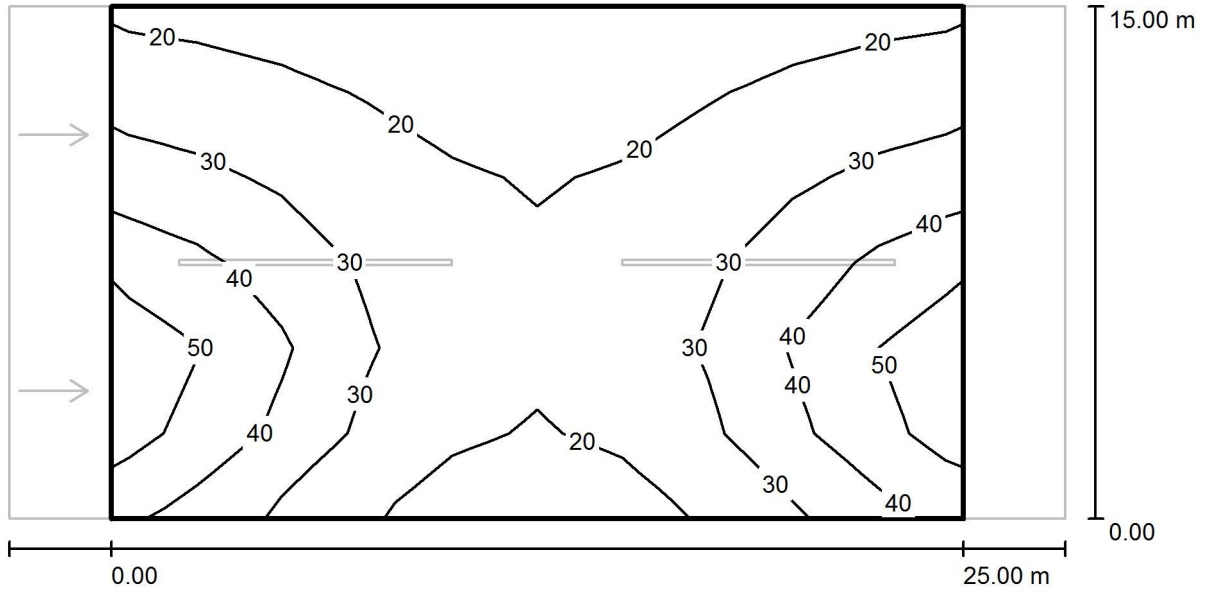
	L_{av} [cd/m ²]	U0	UI	TI [%]	SR
Calculated values:	1.66	0.37	0.89	12	0.42
Required values according to class:	≥ 0.75	≥ 0.40	≥ 0.60	≤ 15	≥ 0.50
Fulfilled/Not fulfilled:	✓	✗	✓	✓	✗

Assigned Observer (2 Pieces):

No.	Observer	Position [m]	L_{av} [cd/m ²]	U0	UI	TI [%]
1	Observer 1	(-60.000, 3.750, 1.500)	1.66	0.37	0.93	12
2	Observer 2	(-60.000, 11.250, 1.500)	1.72	0.39	0.89	7

Operator
Telephone
Fax
e-Mail

Street 1 / Valuation Field Roadway 1 / Isolines (E)



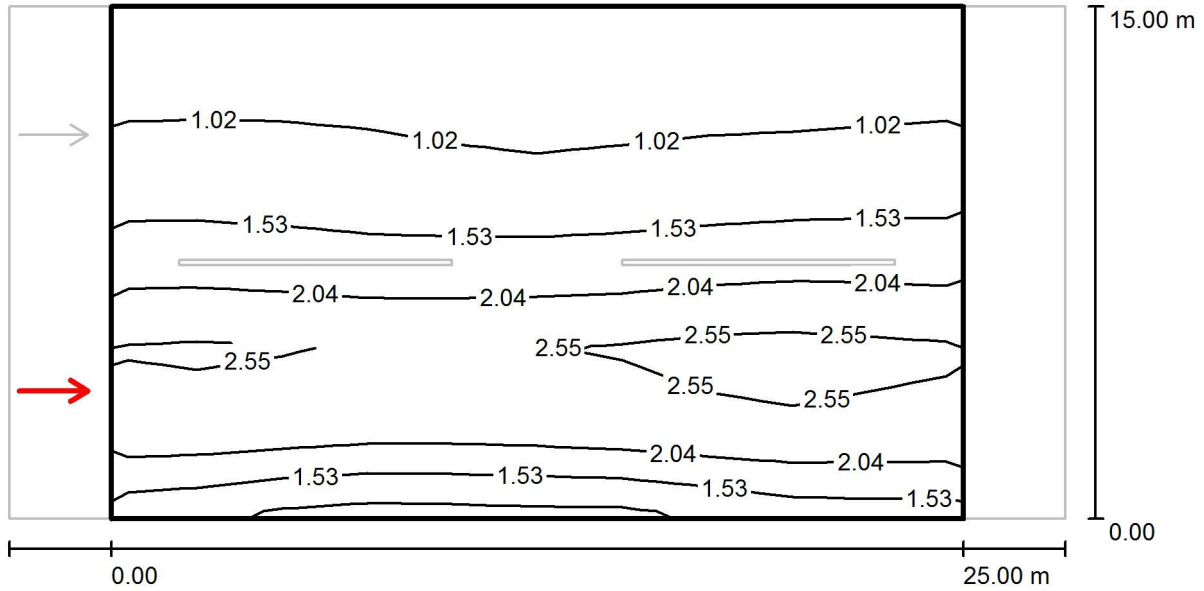
Values in Lux, Scale 1 : 222

Grid: 10 x 6 Points

E_{av} [lx]	E_{min} [lx]	E_{max} [lx]	u0	E_{min} / E_{max}
29	13	57	0.434	0.222

Operator
Telephone
Fax
e-Mail

Street 1 / Valuation Field Roadway 1 / Observer 1 / Isolines (L)



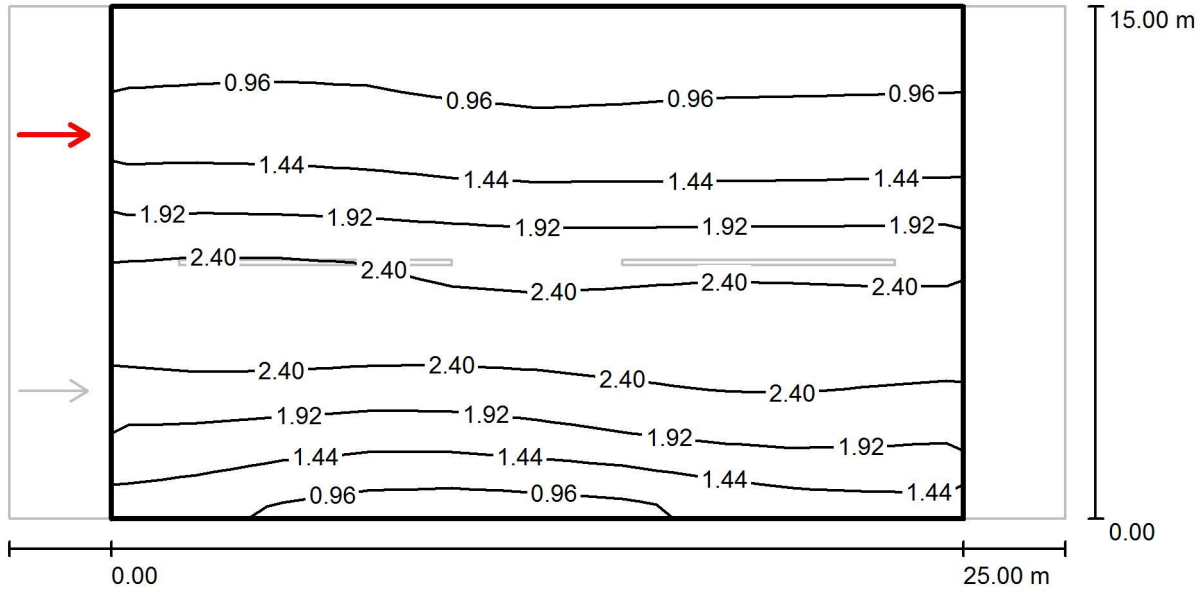
Values in Candela/m², Scale 1 : 222

Grid: 10 x 6 Points
Observer Position: (-60.000 m, 3.750 m, 1.500 m)
tarmac: R3, q0: 0.070

	L_{av} [cd/m ²]	U0	UI	TI [%]
Calculated values:	1.66	0.37	0.93	12
Required values according to class ME4a:	≥ 0.75	≥ 0.40	≥ 0.60	≤ 15
Fulfilled/Not fulfilled:	✓	✗	✓	✓

Operator
Telephone
Fax
e-Mail

Street 1 / Valuation Field Roadway 1 / Observer 2 / Isolines (L)



Values in Candela/m², Scale 1 : 222

Grid: 10 x 6 Points
Observer Position: (-60.000 m, 11.250 m, 1.500 m)
tarmac: R3, q0: 0.070

	L_{av} [cd/m ²]	U0	UI	TI [%]
Calculated values:	1.72	0.39	0.89	7
Required values according to class ME4a:	≥ 0.75	≥ 0.40	≥ 0.60	≤ 15
Fulfilled/Not fulfilled:	✓	✗	✓	✓